

Figure 7. Specimen cradle inside a light box

### Custom ruler and other tags attached to cradle:

The custom ruler is simply a TIFF image printed out at a specific size, to create a ruler 10.75" long by 1" wide (Figure 8) that can be attached to the top of the specimen holder using removable, double-sided tape. Several templates are provided which can serve as a basis for creating a ruler specific to the collection being imaged:

- 1) Ruler Template.psd: This Photoshop image contains separate layers for each part of the ruler, including the institutions logo and/or name. If you have a copy of Photoshop, then modify this image to remove the existing logo and name, and replace them with new ones. Then save the image as a TIFF file for printing.
- 2) Ruler Template.tif: This TIFF image can be used as the starting point if you do not have Photoshop.

If desired, tape a small tag to the lower right corner of the holder that indicates the proper position of the specimen label, as shown in the figure below.



Figure 8. Example of a custom ruler.

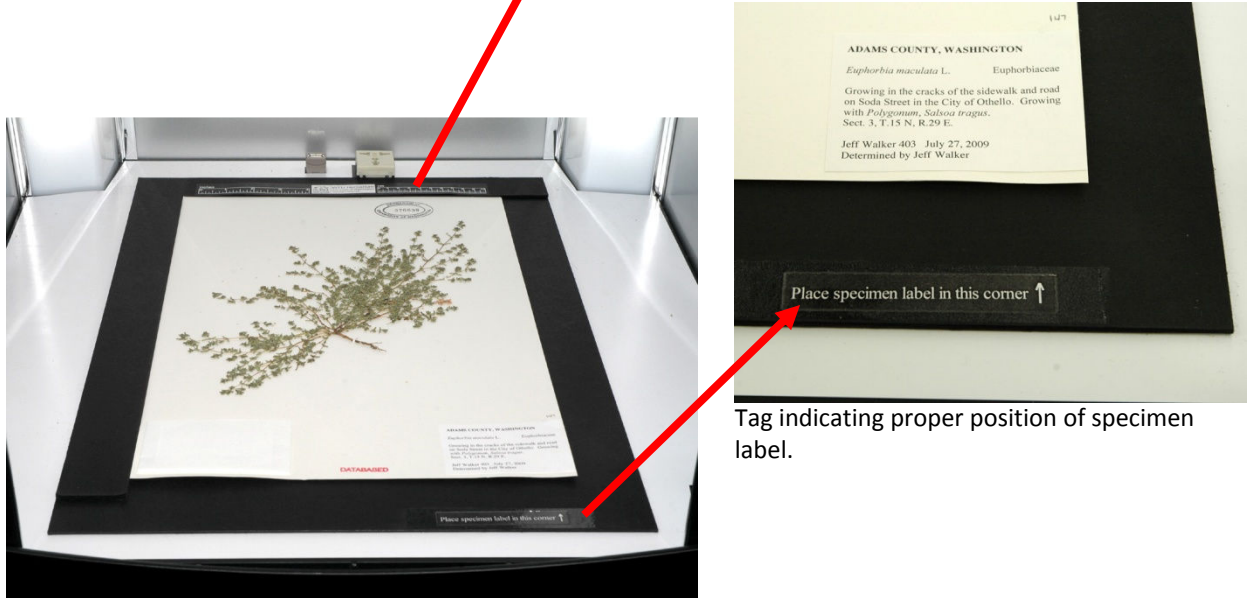


Figure 9. Proper placement of custom ruler and specimen label tag.

SOURCE: Extracted from <https://www.pnwherbaria.org/documentation/custom-components-v1.pdf> on 2022-09-15